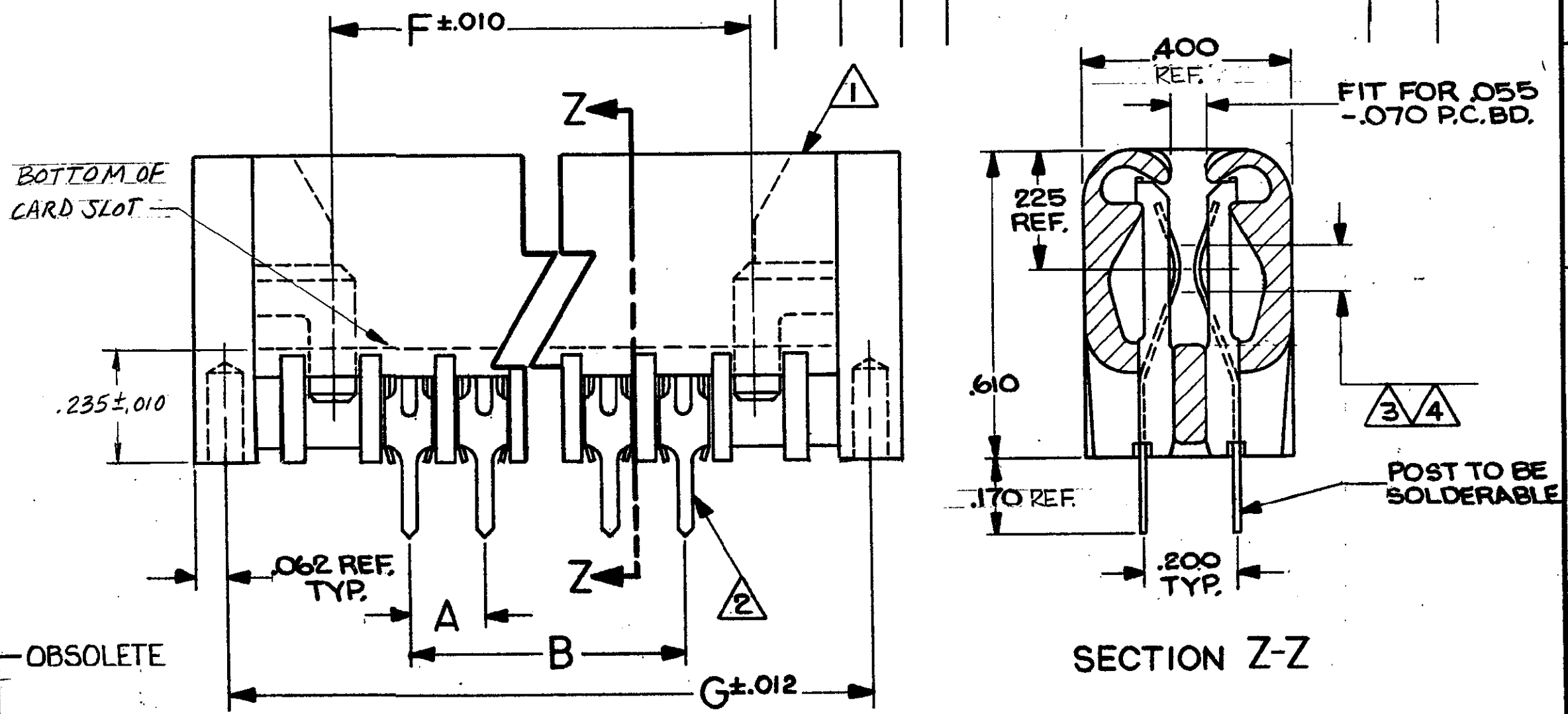


THIS DRAWING IS UNPUBLISHED. RELEASED FOR PUBLICATION		, 19				
© COPYRIGHT 1982 BY AMP INCORPORATED, HARRISBURG, PA. ALL INTERNATIONAL RIGHTS RESERVED. AMP PRODUCTS MAY BE COVERED BY U.S. AND FOREIGN PATENTS AND/OR PATENTS PENDING.						
PART NUMBER	NO. OF POS.	A	B	F	G	FINISH
583715 -1	3	.100	.200	.400	.734	3
-2	4		.300	.500	.834	
-3	5		.400	.600	.934	
-4	6		.500	.700	1.034	
-5	7		.600	.800	1.134	
-6	8		.700	.900	1.234	
-7	9		.800	1.000	1.334	
-8	10		.900	1.100	1.434	
-9	11		1.000	1.200	1.534	
1-583715-0	12		1.100	1.300	1.634	
1-1	13		1.200	1.400	1.734	
1-2	14		1.300	1.500	1.834	
1-3	15		1.400	1.600	1.934	
1-4	16		1.500	1.700	2.034	
1-5	17		1.600	1.800	2.134	
1-6	18		1.700	1.900	2.234	
1-7	19		1.800	2.000	2.334	
1-8	20		1.900	2.100	2.434	
1-9	21		2.000	2.200	2.534	
2-583715-0	22		2.100	2.300	2.634	
2-1	23		2.200	2.400	2.734	
2-2	24		2.300	2.500	2.834	
2-3	25		2.400	2.600	2.934	
2-4	26		2.500	2.700	3.034	
2-5	27		2.600	2.800	3.134	
2-6	28		2.700	2.900	3.234	
2-7	29		2.800	3.000	3.334	
2-8	30		2.900	3.100	3.434	
2-9	31		3.000	3.200	3.534	
3-583715-0	32		3.100	3.300	3.634	
3-1	33		3.200	3.400	3.734	
3-2	34		3.300	3.500	3.834	
3-3	35		3.400	3.600	3.934	
3-4	36		3.500	3.700	4.034	
3-5	37		3.600	3.800	4.134	
3-6	38		3.700	3.900	4.234	
3-7	39		3.800	4.000	4.334	
3-8	40		3.900	4.100	4.434	
3-9	41		4.000	4.200	4.534	
4-583715-0	42		4.100	4.300	4.634	
4-1	43		4.200	4.400	4.734	
4-2	44		4.300	4.500	4.834	
4-3	45		4.400	4.600	4.934	
4-4	46		4.500	4.700	5.034	
4-5	47		4.600	4.800	5.134	
4-6	48		4.700	4.900	5.234	
4-7	49		4.800	5.000	5.334	
4-8	50		4.900	5.100	5.434	
4-9	51		5.000	5.200	5.534	
5-583715-0	60		5.900	6.100	6.434	
5-1	72		7.100	7.300	7.634	
5-2	74		7.300	7.500	7.834	
5-3	65		6.400	6.600	6.934	
5-4	70		6.900	7.100	7.434	
5-5	5		.400	.600	.934	
5-6	55		5.400	5.600	5.934	
5-7	80		7.900	8.100	8.434	
5-8	61		6.000	6.200	6.534	
5-9	55		5.400	5.600	5.934	
6-583715-0	58	.100	5.700	5.900	6.234	

PART NUMBER	NO. OF POS	A	B	F	G	FINISH
6-583715-1	17	.100	1.600	1.800	2.134	4

REVISIONS			
DESCRIPTION	DATE	APPROVED	
E REDRAW W/O CHANGE 8070	10-82		
F REV PER AD1583	3/12/87	CP	LEW
G REV PER AD 1633	6-87		LEW
H REV PER AD 1698	8-87		LEW
J REV PER AD 1868	3/88		LEW
K REV PER AD 2116	3/88		LEW
L REL 6--1 PER 87-5193-291-1	4/88		LEW/NWR
M REV PER AD 2949	11/88		LEW/NWR
N REV PER AD 3150	2/89		LEW/NWR
P REV PER AD3493	3/90		NWR
R REV 0010-0252-93	3-8-93		LEW
S REV PER 0010-1602-95	1-96		PB.1
T REV PER EC 0320-209-97	7-7-97		NS

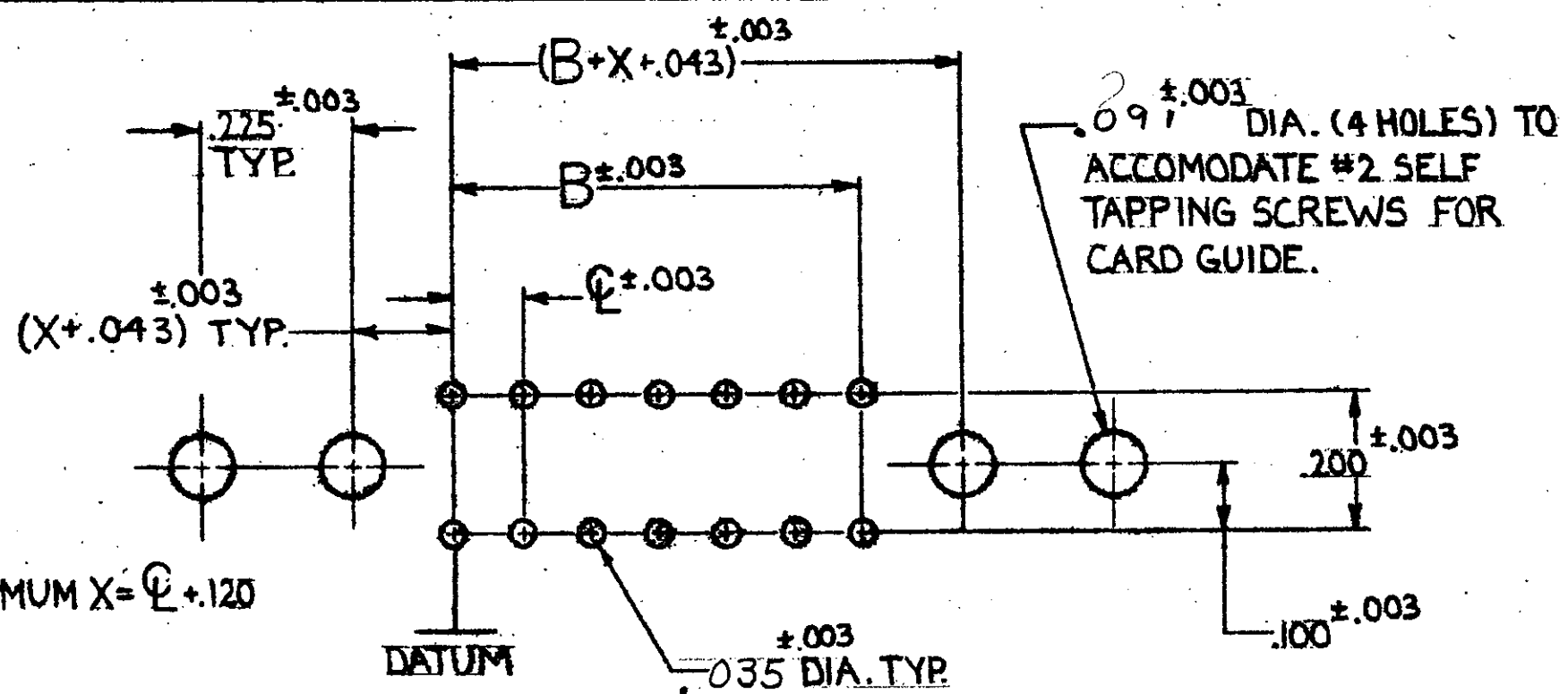


- 1 HOUSING MATERIAL : GLASS-FILLED POLYESTER, COLOR-BLACK.
- 2 CONTACT MATERIAL : PHOSPHOR BRONZE
- 3 FINISH : .000015 GOLD, SELECTIVE
- 4 FINISH : .000030 GOLD, SELECTIVE

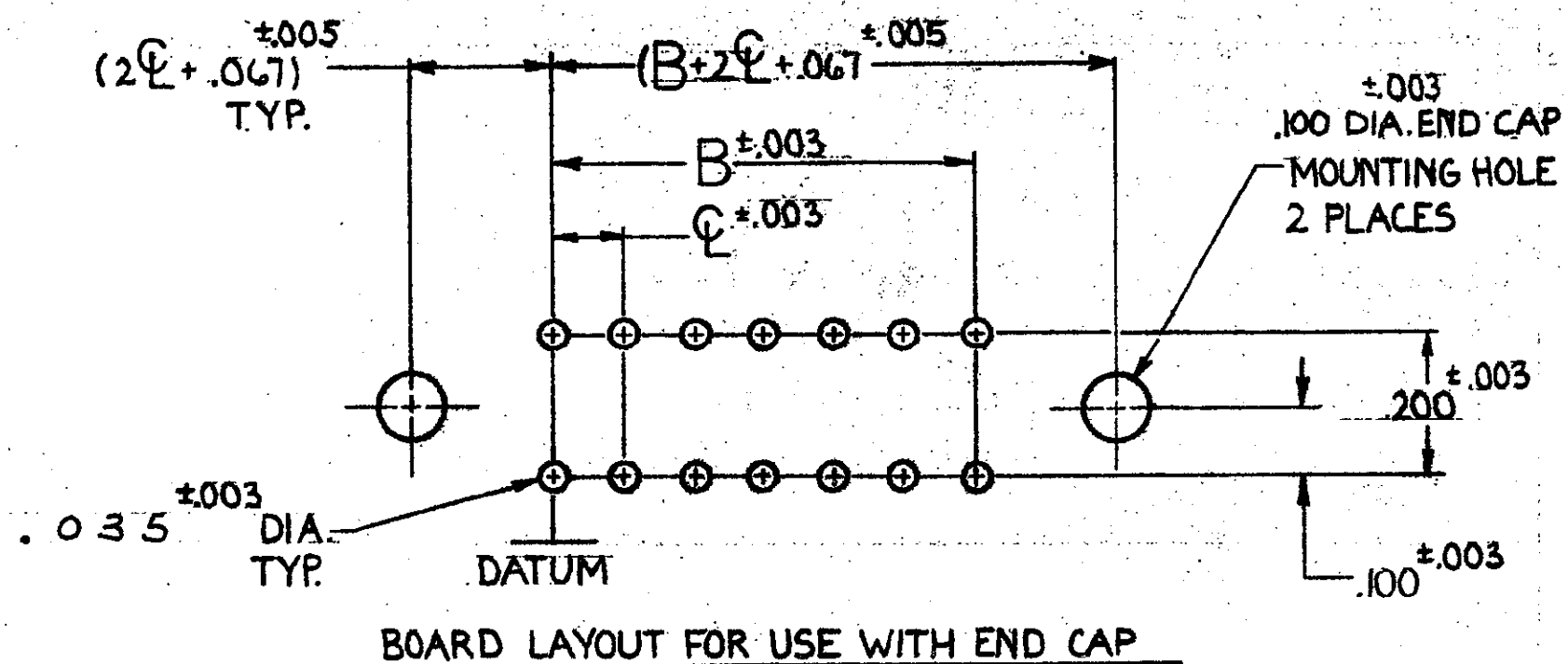
UNLESS OTHERWISE SPECIFIED DIMENSIONS ARE IN INCHES. TOLERANCES ON: DECIMALS ±.005 ANGLES		CONTRACT NO DR <i>A.M. SHARPE</i> 9-9-82 CHK <i>Ray</i> 10-11-82		AMP AMP INCORPORATED Harrisburg, Pa. 17105	
MATERIAL	1 2	APPD <i>Ray Johnston</i> 10-11-82	NAME ASSEMBLY, TWIN LEAF, .100 X .010 X .024 SOLDER TYPE POST, END CAP VERSION		
FINISH	3 4	APPD <i>MRT Hummer</i> 10-11-82	SIZE C	FSCM NO 00779	DRAWING NO 583715
OTHER APPD			SCALE 4:1	SHEET 1 OF 2	

© COPYRIGHT 1971 BY AMP INCORPORATED, HARRISBURG, PA. ALL INTERNATIONAL RIGHTS RESERVED. AMP INCORPORATED PRODUCTS COVERED BY U. S. AND FOREIGN PATENTS AND/OR PATENTS PENDING.

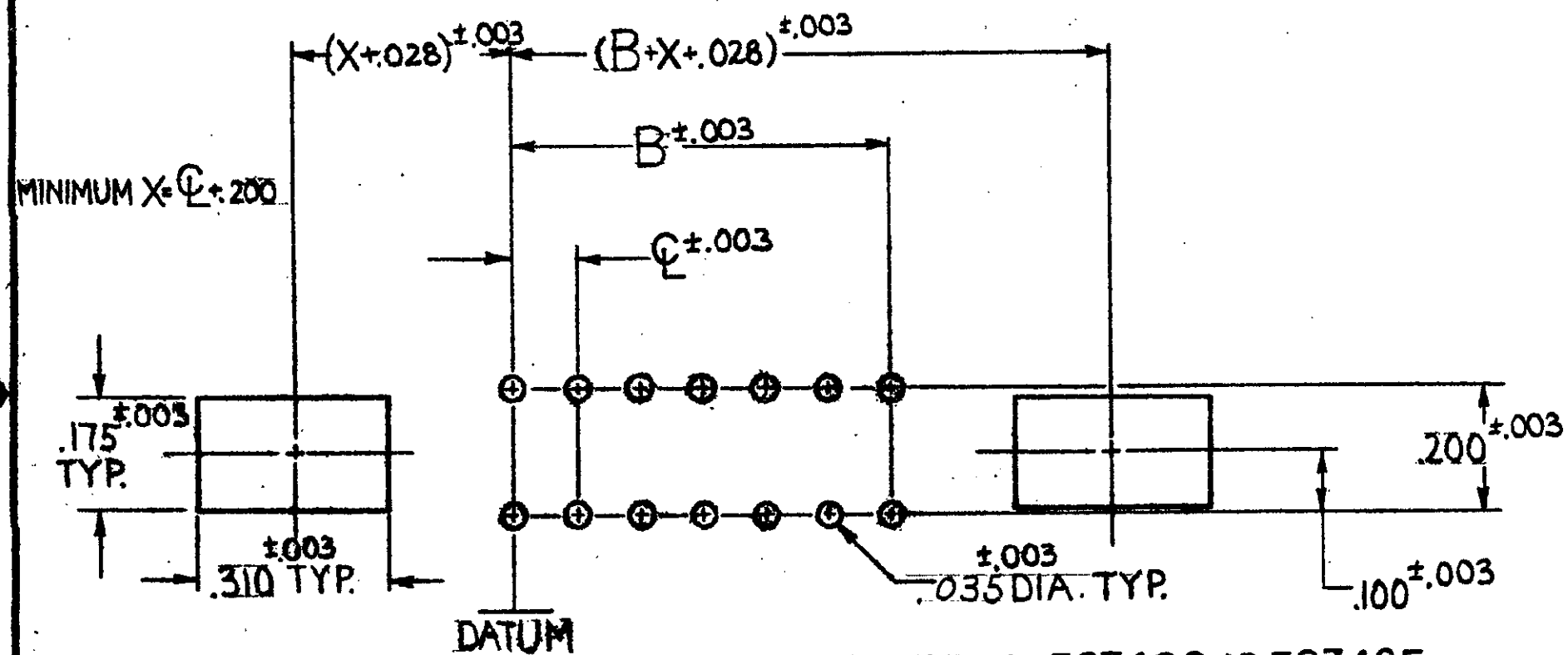
REVISIONS						
P	F	ZONE	LTR	DESCRIPTION	DATE	APPROVED
				SEE SHEET 1		



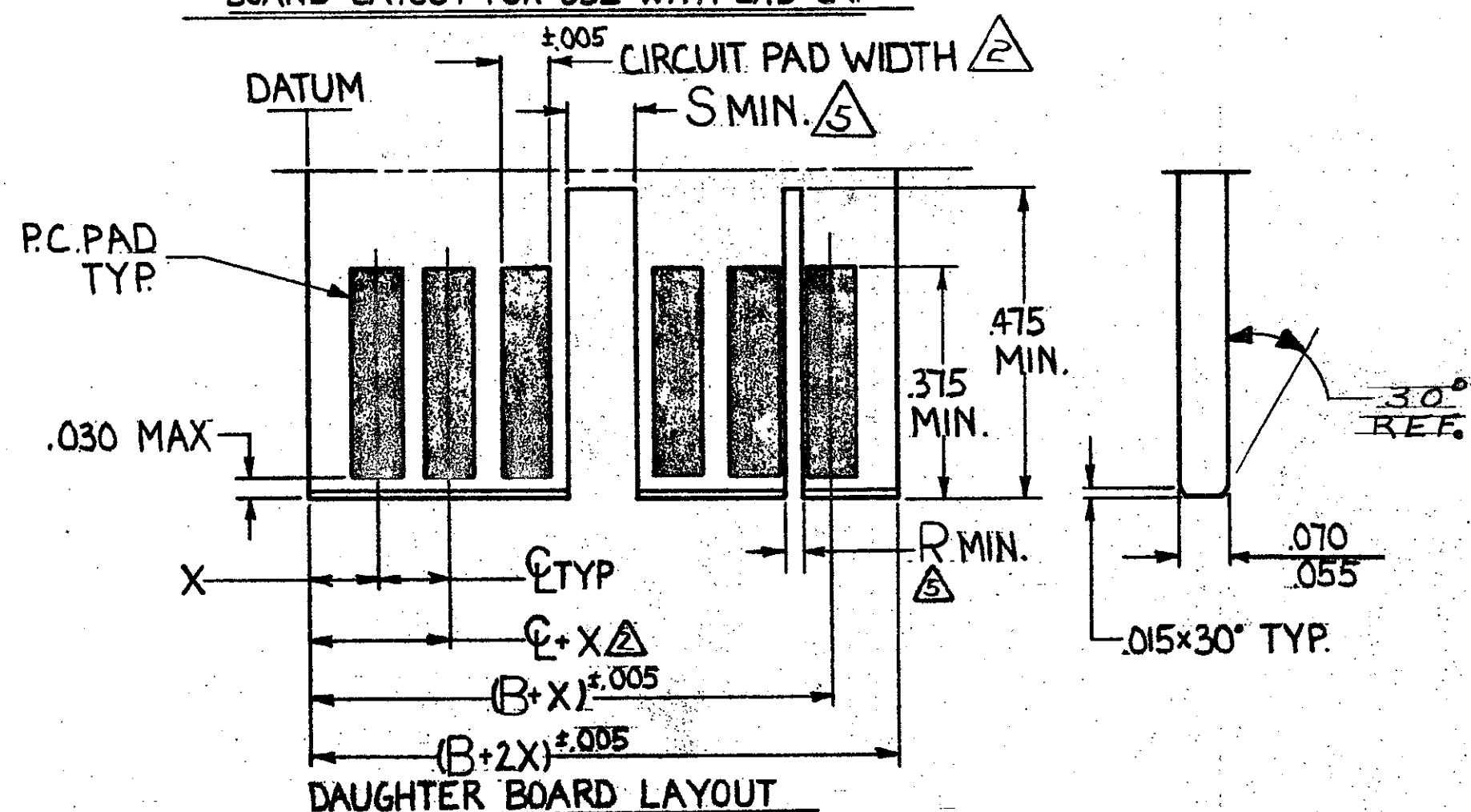
BOARD LAYOUT FOR USE WITH AMP CARD GUIDE PART NO. 583671



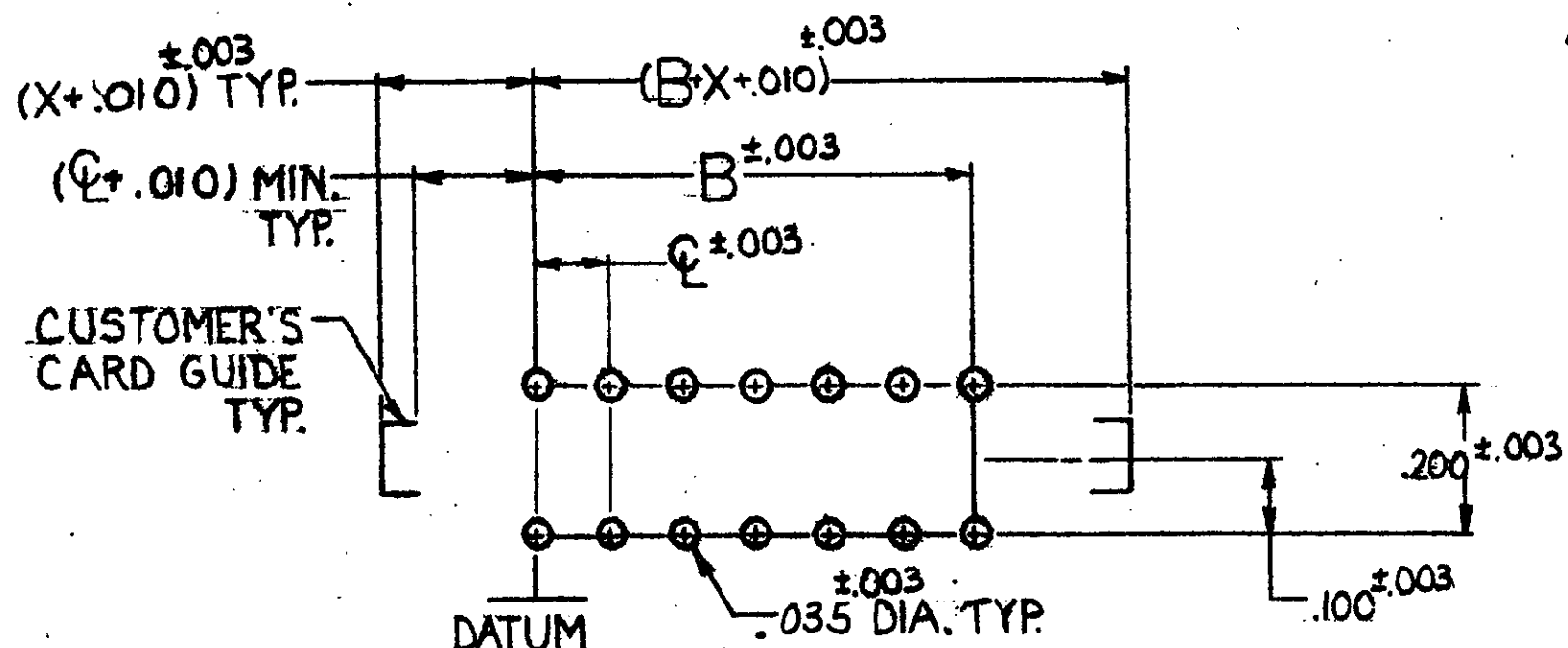
BOARD LAYOUT FOR USE WITH END CAP



BOARD LAYOUT FOR USE WITH AMP CARD GUIDE PART NO. 583408 OR 583425



DAUGHTER BOARD LAYOUT



BOARD LAYOUT FOR USE WITH CUSTOMER SUPPLIED CARD GUIDE.

- MAX. ALLOWABLE WARPAGE OF MOTHER BOARD NOT TO EXCEED .005/INCH. MAX. ALLOWABLE BOW OF DAUGHTER BOARD NOT TO EXCEED .010/INCH. THICKNESS OF MOTHER BOARD IS .062 FOR DOUBLE SLOTTED CARD GUIDES AND .104 MAX. FOR ALL OTHER MOUNTING CONDITIONS.
- △ EACH PAD LOCATION INCREASES BY C ±.005 WITH A NON-CUMULATIVE TOLERANCE OF ±.005
CIRCUIT PAD WIDTH - .045 FOR .100 C, .072 FOR .150 C, .072 FOR .125 C, .080 FOR .156 C
- △ DIMENSIONS APPLY TO BOTH SIDES OF DAUGHTER BOARD.
- △ C INCREMENTS ON MOTHER BOARD HAVE ±.003 NON-CUMULATIVE TOLERANCE.
- △ X IS A CUSTOMER CONTROLLED DIMENSION EXCEPT FOR END CAP ASSEMBLIES WHERE X=C-.008
- △ THE SLOT FOR INTER-CONTACT KEYING PLUGS MUST BE CENTERED BETWEEN THE PRINTED CIRCUIT PADS, WHILE THE SLOT FOR ON-CONTACT KEYING PLUGS MUST BE CENTERED ON THE AREA OF A PRINTED CIRCUIT PAD.

INTER-CONTACT KEYING PLUG	R	FOR CENTER LINE SPACING	ON-CONTACT KEYING PLUG	S	FOR CENTER LINE SPACING
530030-1	.050	.125-.150-.156	58314-1	.125	.100-.125
530030-2	.040	.100	58314-2	.160	.150-.156

UNLESS OTHERWISE SPECIFIED DIMENSIONS ARE IN INCHES. TOLERANCES ON: DECIMALS ± ANGLES ±		CONTRACT NO 10-5-82		PART NO	
MATERIAL		DR <i>M. Smith</i> 10-5-82		AMP INCORPORATED Harrisburg, Pa.	
FINISH		CHK <i>Ray J.</i> 10-11-82		NAME HOUSING ASSEMBLY TWIN LEAF CONNECTOR	
		APPD <i>Ray Johnston</i> 10-11-82		SIZE CODE IDENT NO DRAWING NO	
		APPD <i>M.R. Tschumma</i> 10-12-82		C 00779 583715	
		DSGN APPD		SCALE #	
		OTHER APPD		SHEET 2 OF 2	